

062163
 RECEIVED
 LARAMIE COUNTY
 CHEYENNE, WY.

'89 SEP 25 PM 1 59

CERTIFIED LAND CORNER RECORDATION

DESCRIPTION OF CORNER EVIDENCE FOUND, AND ORIGINAL RECORD (if known)

Found standard G.L.O. monument projecting 6" above ground 1.59' Northeast of fence corner.

1/4
 S.16 S.15
 T.14N., R.70W.
 6th P.M.

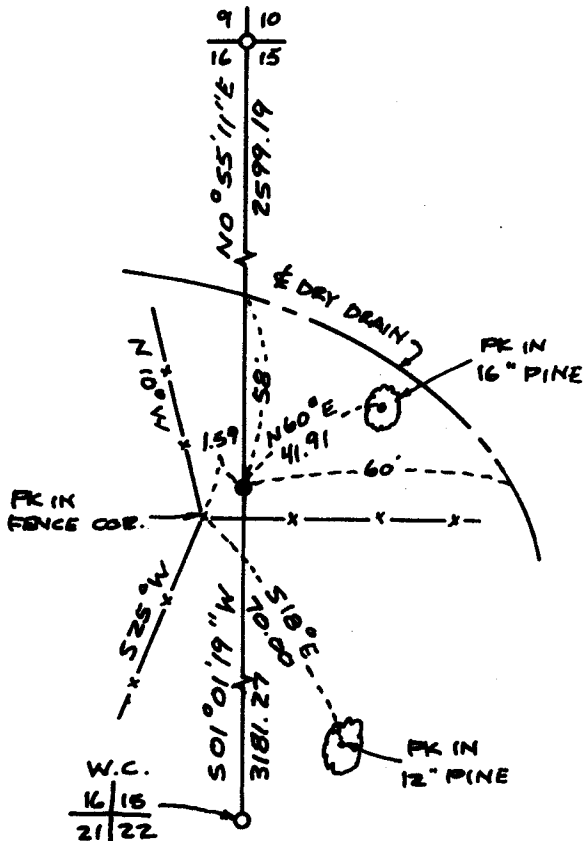
G.L.O. Record: Set an iron post, 3' long, 1" diameter, 27" in ground, with original stone deposited alongside, with brass cap stamped as shown below with mound of stone.

DESCRIPTION OF MONUMENT AND ACCESSORIES ESTABLISHED TO PERPETUATE THE ORIGINAL LOCATION OF THIS CORNER:

At the corner: Not remonumented.

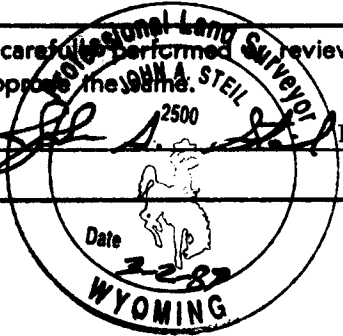
Accessories : See ties below.

SKETCH, WITH COURSE AND DISTANCE TO ADJACENT CORNER IF DETERMINED IN THIS SURVEY. (May Sketch or Paste Reproduction on Reverse Side.)



I, John A. Steil certify that I have carefully performed and reviewed the work done on the diagrammed corner as reported on this recordation form and approve the same.

Signature of Surveyor John A. Steil L.S. 2500
 Registration No.



STATE OF WYOMING,
 Office of Clerk and Recorder,
 County of _____

This "corner record" was filed for record on the _____ day of _____, 19____, was noted on the cross-index plat and is assigned page No. _____, in book No. _____.

County Official				
Cross Index No.	L-13	T. 14N	R. 70W	Mer. 6th
		T. _____	R. _____	Mer.
		T. _____	R. _____	Mer.
		T. _____	R. _____	Mer.
		T. _____	R. _____	Mer.
		T. _____	R. _____	Mer.
		T. _____	R. _____	Mer.